

Sadler's Wells East
Senior Technician, Automated Flys & Stage

**S A D L
E R S W
E L L S**

Sadler's Wells East
**Senior Technician, Automated
Flys & Stage**



Contents

About us 3

Our Values..... 4

The Department..... 5

The Role 6

What are my responsibilities? 6

Who should apply? 8

Why work for us? 8

About us

Sadler's Wells is a world-leading creative organisation, dedicated to presenting, producing, and touring dance made today in all its forms. Sadler's Wells commissions, presents, and produces more dance than any other theatre in the world – from tango to hip hop, ballet to flamenco, Bollywood to innovative contemporary dance. With an innovative, year-round programme of performances and learning activities, this is the place where artists come together to create dance, and where we welcome everyone to experience dance and be inspired.

Our aim is to reflect and respond to the world through dance: enabling artists of all backgrounds to create dance that moves us and opens our minds; sharing those experiences with the widest possible audiences to enrich their lives and deepen their understanding of what it means to be human.

More than half a million people come to our theatres in London each year, with many more enjoying our touring productions at partner venues across the UK and in cities around the world. Sadler's Wells Theatre has been located in Islington since the 17th century. Today Sadler's Wells consists of the Sadler's Wells Theatre (1,500 seats); the Lilian Baylis Studio (180 seats); three rehearsal studios; bars, a café, facilities for private and corporate entertaining and offices for Sadler's Wells' colleagues.

Our second theatre building and West End home, the Peacock (1,000 seats), is subject to a unique agreement whereby Sadler's Wells and the London School of Economics jointly manage it, with the LSE presenting its lectures to students during the day and Sadler's Wells presenting theatre at night.

Future Plans

Our fourth venue Sadler's Wells East will open in 2024 in east London's Queen Elizabeth Olympic Park. Sadler's Wells' new space will be located on the Stratford Waterfront site, opposite the London Aquatics Centre, alongside UAL's London College of Fashion and the V&A Museum. The site will form part of a new cultural and education district, which will also include a major new University College London (UCL) campus and have direct links to the creative communities already based in east London.

Sadler's Wells' new space will house a 550-seat mid-scale theatre, as well as facilities for a choreographic centre and a hip hop theatre academy, all planned to open in 2024 as well as facilities for the Rose Choreographic School and Academy Breakin' Convention.

Our Values

COLLABORATION



- We are encouraging and supportive
- We work as one team
- We listen
- We seek and value diversity of thought and practice
- We pool our knowledge, resources, and creativity
- We create opportunities to work in partnership and minimise silos

EXCELLENCE



- We are ambitious and driven
- We make and share meaningful, exciting, and impactful dance
- We are the best we can be each day, going above and beyond in our own way
- We continuously learn and develop our skills
- We operate sustainably by maximising our resources
- We hold each other accountable

INCLUSION



- We are brave and kind
- We create a safe place so colleagues can bring their full selves to work
- We celebrate our differences
- We remove barriers to access or equality
- We are actively anti-racist and address all forms of discrimination
- We engage and reflect the diverse community we are part of

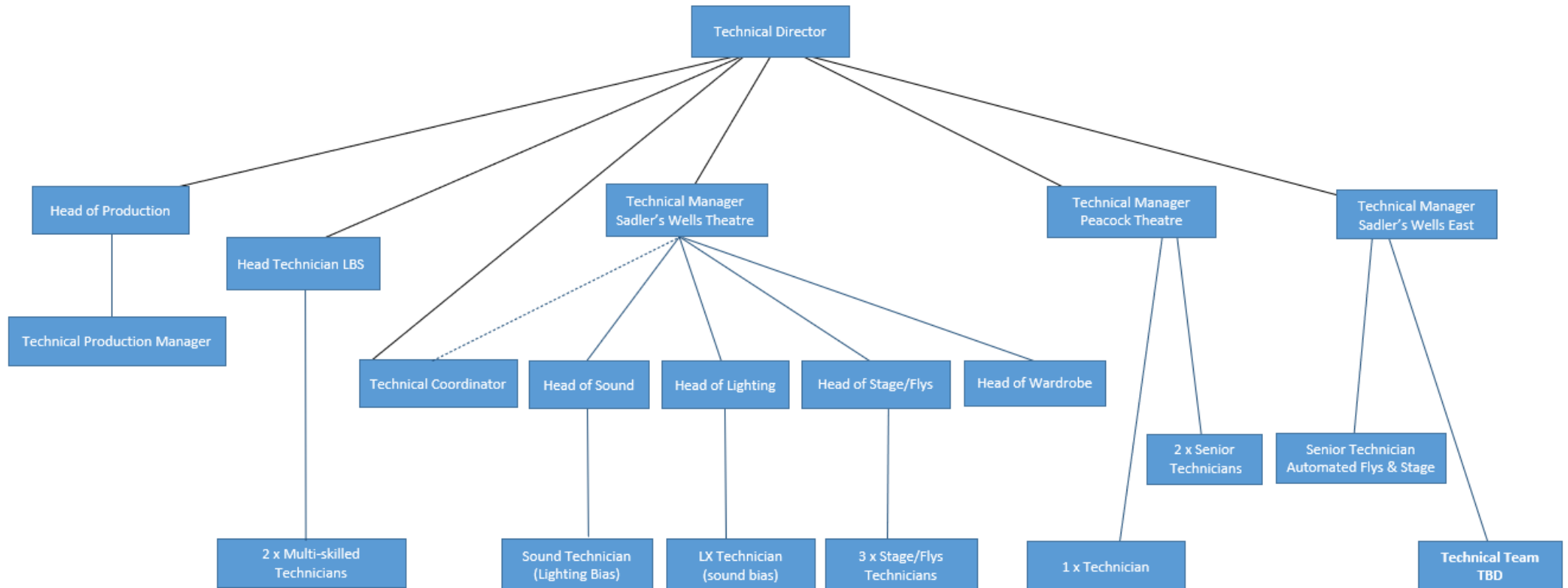
INNOVATION



- We are curious and bold
- We find a better way in the everyday
- We challenge and question, asking 'why?' and 'why not?'
- We take creative and calculated risks
- We try new things and embrace change
- We learn and grow from our mistakes

The Department

The role of Senior Technician, Automated Flys and Stage for SWE is part of our development of Sadlers Wells East and will report directly to the Technical Manager. The Technical Department is also comprised of two Technical Managers for Sadler's Wells Angel and Peacock Theatres, as well as a Head Technician in the Lilian Baylis Studio, each of whom manage a team of permanent and casual staff.



The Role

The principal responsibility of the Senior Automated Flys & Stage Technician is to assist in the preparation and running of productions, ensuring that technical requirements are met in a safe and professional manner across the theatre space, studios, and its additional spaces. Our new venue will have state of the art equipment with an automated flys system, it will be the responsibility of this role to operate and maintain this equipment to the highest standards. This position will assist in the commissioning of the new Flying system and stage elements as the venue prepares to launch and receive its first season of shows. The role holder will be responsible for assisting in the supervision of the Stage and Flys teams and may at times be asked to deputise for the Technical Manager in elements of show production and operation.

What are my responsibilities?

Technical

- Assist the Technical Manager with the booking and scheduling of the Stage and Flys teams for shows, events, and productions.
- Thorough and existing understanding of automated Theatre Flying Systems, Stage Automation, Rigging and Stage Systems.
- Lead the running of fit-ups, get-outs, and shows across Stage and in the Flys department. Supervising the show crew in their duties.
- Maintain a positive and proactive approach to the shows and to visiting company requirements and requests.
- Assist the Technical Manager on show pre-production and maintenance tasks as required across the venue and studios.
- Always maintain a high standard of production values and professional etiquette.

- Prepare, program and undertake show Flys cues, conveying clear and concise notes and handovers to team members.
- Continually promote, maintain, and improve a positive approach to Health & Safety and safe working methods.
- Lead on the operation and maintenance of the Flys and Stage systems, proactively suggesting improvements and efficient ways of working.
- The position will also be required to work collaboratively with the technical teams at SWT, Peacock Theatre, Lilian Baylis Studio and external sites, as well as on tour if necessary.

General

- Live, breathe and role model our organisational values of Excellence, Collaboration, Inclusion, and Innovation, being aware of the influence and impact you can have in Sadler's Wells

Senior Technician, Automated Flys & Stage

- Attend occasional staff meetings, training sessions and other events which may take place outside normal working hours
- Undertake other duties as may be reasonably required.
- At all times to perform duties and responsibilities regarding Sadler's Wells' Equality, Diversity and Inclusion and Health and Safety Policies. This may include aiding with evacuation procedures or building searches in the event of an emergency at any of Sadler's Wells' premise

THIS JOB DESCRIPTION IS A GUIDE TO THE NATURE OF THE WORK REQUIRED OF THIS POSITION. IT IS NEITHER WHOLLY COMPREHENSIVE NOR RESTRICTIVE AND DOES NOT FORM PART OF THE CONTRACT OF EMPLOYMENT.

Who should apply?

The applicant should be a flexible, practical person with proven technical skills and experience in professional technical theatre work. The applicant should be calm under pressure, a good problem solver and be able to work well as part of a team. The applicant should be self-motivated and be confident in a wide range of technical theatre and flys and stage skills. Experience of automated flying or Stage automation is essential.

Applicants need to have a flexible approach to working patterns and ideally will have experience of working with either repertory or touring companies. All technical staff are expected to have the general skills appropriate to the demands of a large theatre with a varied programme.

Please find below the skills and experience requirements to undertake this post.

These essential and desirable criteria will be used in the decision-making process for recruitment. Please give examples of how you have exhibited these behaviours in your previous role(s). You should address these on the application form and in your supporting statement.

Be as specific as possible, try to provide evidence (by example where possible) of skills, knowledge, and experience.

Skills and Experience

Essential

- Experience of working with large-scale opera, dance or ballet
- Experience of collaborating with touring companies and / or venues
- Proficient in computer skills in order to train effectively in the automated flying system
- Demonstrable knowledge of health and safety issues and safe working practice
- Knowledge, skills, and experience to 'advanced' level in automated flying and flying systems
- Knowledge, skills, and experience to 'advanced manual' level in flying
- Knowledge, skills, and experience to 'basic' level in entertainment rigging
- Flexible attitude and able to work as part of a team
- Ability to communicate effectively and politely with co-workers
- Must currently hold the right to work in the United Kingdom

Additional, but not essential

- Experience of supervising staff and of team leadership
- Experience in set construction techniques
- Knowledge, skills, and experience to 'standard' level in stage/carpentry

If you do not have everything listed here, but believe you have demonstrable experience to take into consideration, please apply. We are aware every applicant will have strengths and development areas to accommodate, and we are open to discussions around how we can support the postholder.

Why work for us?

You will be a key part of our mission to make and share dance that inspires us all and delivering our vision to create, through dance, a depth of connection beyond borders, cultures, and languages.

- You will be offered a salary of £31,701.00 per annum based on a permanent, full-time 40-hour contract. Agreed overtime, such as late/early calls, are paid in addition to the basic salary.
- Sadler's Wells is a receiving theatre with different patterns of working to other London theatres. Terms and conditions of employment are subject to a House Agreement with BECTU
- You will get 25 days annual leave per annum, with an additional three days after five years' service.
- You will be enrolled into the Sadler's Wells Trust Ltd. pension scheme.
- You will have access to our Employee Assistance Programme (EAP) to support your wellbeing.
- You will engage in learning and project opportunities to develop personally and professionally and support your career journey.
- You can access an interest-free Season Ticket Loan and a Cycle to Work salary sacrifice scheme.
- You will be eligible for a death in service insurance policy covering twice your annual salary.
- You will be encouraged to attend performances at both theatres with a discretionary allocation of tickets to employees (subject to availability), and a staff discount at the Fox Garden Court Café
- We welcome everyone through our doors and encourage and enable people to be the best versions of themselves and to feel confident and capable in their roles.
- We embrace a blend between home and office working, and we welcome a conversation about flexible working and your needs.
- We celebrate diversity in the dance we share and showcase, and in our workplace. We are working hard to be more inclusive and increasing access both on stage and off and have several anti-racism commitments to make lasting changes in the way we work.
- For staff who can demonstrate additional skills, training or experience recognised by the skill assessment scheme, a premium payment will be made of £19.46 per week for each additional skill (at 100% or pro rata). This will apply whether employees bring these additional skills with them or acquire them whilst working at Sadler's Wells as a result of training or experience gained. You will be assessed for these skills on successful completion of your probationary period

Making an application

A Job Description and Person Specification are included in this document. If after reading you are still interested in applying, please find further details and information on how to apply [here](#).

If you would like support or have any queries regarding the format or submission of the application, please contact us on recruitment@sadlerswells.com.

We welcome applications from people from all backgrounds who feel they align with our mission, vision and values. We are international and multicultural on our stages, and we want to reflect that in our organisation. By celebrating difference and incorporating diverse points of view and experiences, we can become closer to our artists, audiences, and the communities we serve.

We are proud to be a Disability Confident employer meaning we have been certified by the government as actively taking steps to attract, recruit and retain disabled workers. We understand that some disabled colleagues will need adjustments to help them perform to the best of their ability – these can be changes to

the built environment and furniture, the tools and technology they use in doing their job, aspects of the role, ongoing support or working arrangements.

Sadler's Wells also works collaboratively with Parents in Performing Arts (PiPA) in efforts to support parents and carers within the industry.

We welcome all applications by 11:59pm GMT on Wednesday 27th December 2023. Interviews will take place on Thursday 4th January 2024.