

SADLER
ERSW
ELLS

Sadler's Wells
Theatre Technician, Stage and
Automated Flys



Contents

About us	3
Our Values.....	4
The Department.....	5
What are my responsibilities?	6
Who should apply?	7
Why work for us?	8

About us

Sadler's Wells is a world-leading creative organisation, dedicated to presenting, producing and touring dance made today in all its forms. Sadler's Wells commissions, presents and produces more dance than any other theatre in the world – from tango to hip hop, ballet to flamenco, Bollywood to cutting-edge contemporary dance. With an innovative, year-round programme of performances and learning activities, this is the place where artists come together to create dance, and where we welcome everyone to experience dance and be inspired.

Our aim is to reflect and respond to the world through dance: enabling artists of all backgrounds to create dance that moves us and opens our minds; sharing those experiences with the widest possible audiences to enrich their lives and deepen their understanding of what it means to be human.

More than half a million people come to our theatres in London each year, with many more enjoying our touring productions at partner venues across the UK and in cities around the world. Sadler's Wells Theatre has been located in Islington since the 17th century. Today Sadler's Wells consists of the Sadler's Wells Theatre (1,500 seats); the Lilian Baylis Studio (180 seats); three rehearsal studios; bars, a café, facilities for private and corporate entertaining and offices for Sadler's Wells' colleagues.

Our second theatre building and West End home, the Peacock (1,000 seats), is subject to a unique agreement whereby Sadler's Wells and the London School of Economics jointly manage it, with the LSE presenting its lectures to students during the day and Sadler's Wells presenting theatre at night.

Future Plans

Plans are underway for the development of a fourth venue in east London's Queen Elizabeth Olympic Park. Sadler's Wells' new space will be located on the Stratford Waterfront site, opposite the London Aquatics Centre, alongside UAL's London College of Fashion and the V&A Museum. The site will form part of a new cultural and education district, which will also include a major new University College London (UCL) campus and have direct links to the creative communities already based in east London.

Sadler's Wells' new space will house a 550-seat mid-scale theatre, as well as facilities for a choreographic centre and a hip-hop theatre academy, all planned to open in 2024.

Our Values

COLLABORATION



- We are encouraging and supportive
- We work as one collective team
- We listen and empower every voice
- We seek and value diversity of thought and experience
- We pool our knowledge, resources and creativity
- We create opportunities to work strategically and in partnership

EXCELLENCE



- We are ambitious and driven
- We make and share meaningful, exciting and impactful dance
- We do the best we can each day
- We continuously learn and develop our skills
- We operate sustainably by managing our resources effectively
- We hold each other accountable

INCLUSION



- We are brave and kind
- We create a safe place so colleagues can bring their full selves to work
- We celebrate and respect our differences
- We remove barriers to access or equality
- We actively address all forms of discrimination
- We engage and reflect the diverse communities we are part of

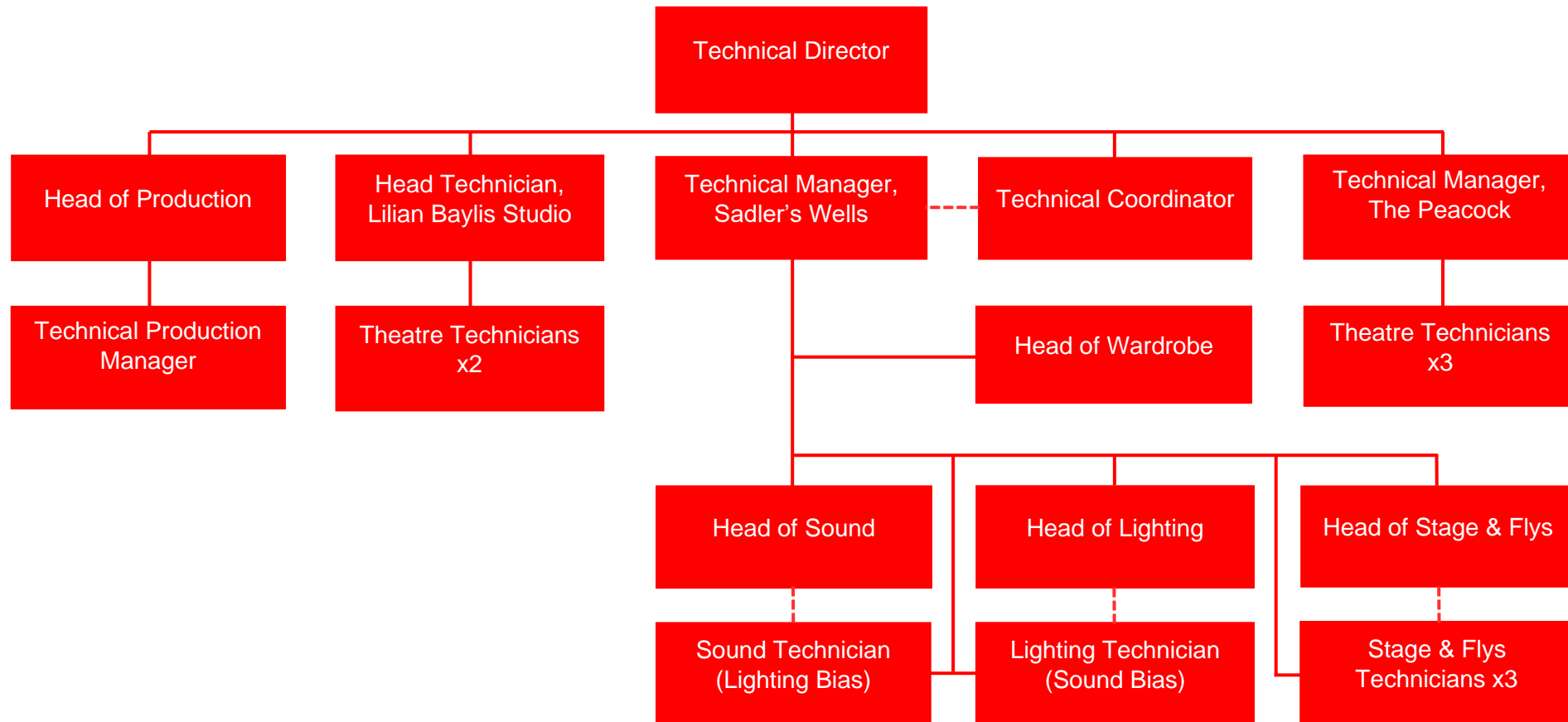
INNOVATION



- We are curious and bold
- We find a better way in the every day
- We challenge and question why, and why not
- We take creative and calculated risks
- We cultivate ideas, try new things and embrace change
- We learn and grow from our mistakes and successes

The Department

The Technical department is led by the Technical Director with Technical Managers for Sadler's Wells and Peacock Theatre, each of whom manage a team of permanent and casual colleagues (additional staff are recruited according to show requirements in each theatre).



What are my responsibilities?

- Assist in the preparation and running of productions, ensuring that all technical requirements are met in a safe and professional manner.
- Lead the running of fit-ups, get-outs and shows both on Stage and in the Flys.
- Organise and oversee show crew in their duties.
- Rig, programme and undertake show Fly cues.
- Assist the Head of Stage and Flys on show pre-production and maintenance tasks as required.
- Always maintain a high standard of production values.
- Maintain a positive and proactive approach to the shows and to visiting company requirements and requests.
- Always promote and maintain a positive approach to Health & Safety and safe working methods.

- Carry out any duties as may be required by the Technical Director or Technical Manager.

General

- Live, breathe and role model our organisational values of Excellence, Collaboration, Inclusion and Innovation, being aware of the influence and impact you can have.
- Attend occasional staff meetings, training sessions and other events which may take place outside normal working hours.
- Undertake other duties as may be reasonably required.
- At all times to carry out duties and responsibilities regarding Sadler's Wells' Equality, Diversity and Inclusion and Health and Safety Policies. This may include aiding with evacuation procedures or building searches in the event of an emergency at any of Sadler's Wells' premises.

THIS JOB DESCRIPTION IS A GUIDE TO THE NATURE OF THE WORK REQUIRED OF THIS POSITION. IT IS NEITHER WHOLLY COMPREHENSIVE NOR RESTRICTIVE AND DOES NOT FORM PART OF THE CONTRACT OF EMPLOYMENT.

Who should apply?

The successful applicant will demonstrate the following skills, experience, and personal qualities:

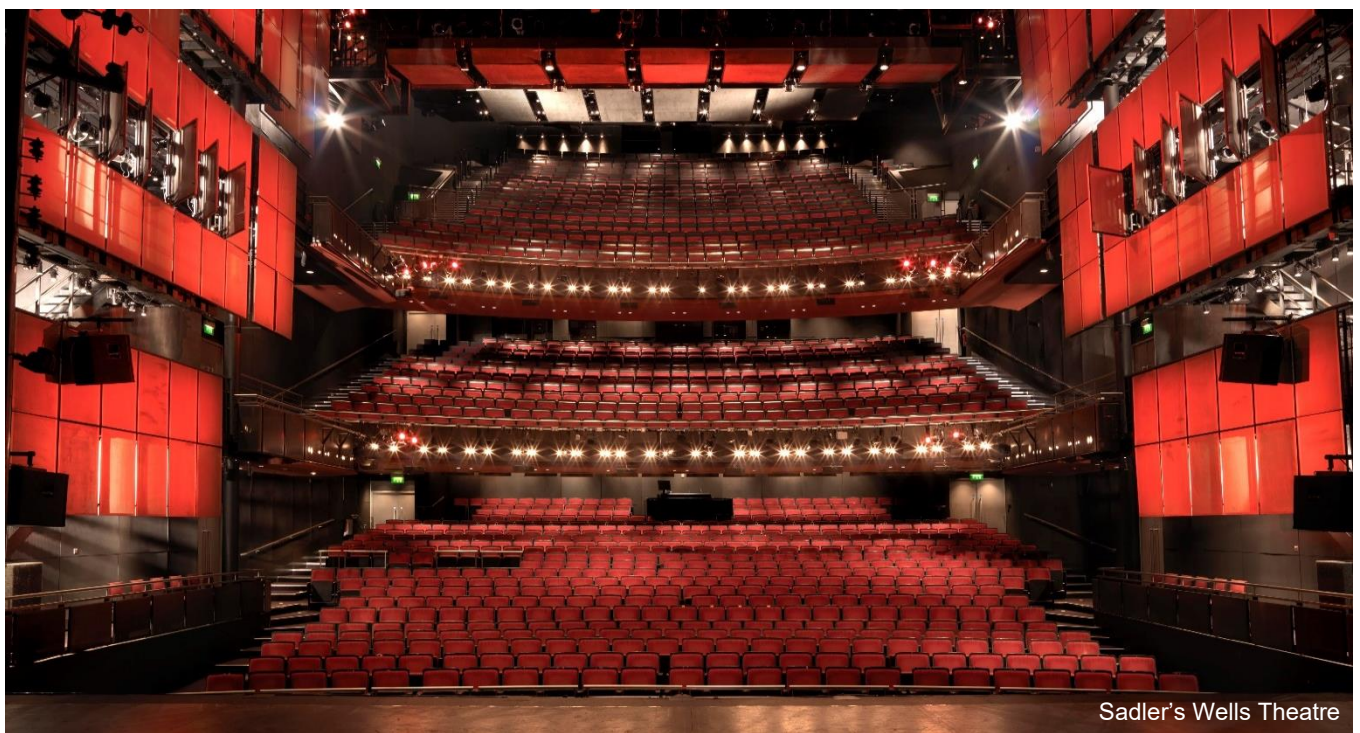
Substantial experience of stage/theatre work, to include:

- Experience of working with large-scale theatre, opera, dance or ballet productions
- Experience of working with touring companies and/or venues
- Good knowledge of health and safety issues and safe working practice
- Proficient in computer skills, in order to train effectively in the automated flying system
- Knowledge, skills and experience to a 'standard' level in manual and/or automated flying
- Knowledge, skills and experience to 'basic' level in heavy rigging
- Flexible attitude and able to work enthusiastically as part of a team
- Ability to communicate effectively and politely with co-workers
- Aligned with Sadler's Wells' values
- Must currently hold the right to work in the United Kingdom

Additionally, but not essential:

- Experience of supervising others and of team leadership
- Experience in set construction techniques
- Knowledge, skills and experience to an 'advanced' level in automated flying
- Knowledge, skills and experience to a 'standard' level in stage/carpentry

If you don't have everything listed here, but believe you have demonstrable experience to take into consideration, please apply. We are aware every applicant will have strengths and development areas to accommodate, and we are open to discussions around how we can support the postholder.



Why work for us?

You will be a key part of our mission to make and share dance that inspires us all.

- Salary: £30,201 per annum*
- Contracted working hours: 40 hours (which includes paid meal breaks, where scheduled). *Any overtime that may be agreed, such as late/early calls, are paid in addition to the basic salary.
- You will get 25 days annual leave per annum, with an additional three days after five years' service.
- You will be enrolled into the Sadler's Wells Trust Ltd. pension scheme.
- You will have access to our Employee Assistance Programme (EAP), to support your wellbeing.
- You will engage in learning and project opportunities, to develop personally and professionally, and support your career journey.
- You can access an interest-free Season Ticket Loan and a Cycle to Work salary sacrifice scheme.
- You will be eligible for a death in service insurance policy covering twice your annual salary.
- You will be encouraged to attend performances at our venues with a discretionary allocation of tickets (subject to availability), and a staff discount at the Fox Garden Court Café.
- We welcome everyone through our doors and encourage and enable people to be the best versions of themselves and to feel confident and capable in their roles.
- We welcome a conversation about flexible working and your needs.
- We celebrate diversity in the dance we share and showcase, and in our workplace. We are working hard to be more inclusive and increasing access both on stage and off and have made commitments to make lasting changes in the way we work.

Making an application

A job description and person specification are included in this document. If after reading you are still interested in applying, please find further details and information on how to apply [here](#).

If you would like further support, or have any queries regarding the format or submission of your application, please contact us on recruitment@sadlerswells.com.

We welcome applications from people from all backgrounds who feel they align with our mission, vision and values. We are international and multicultural on our stages, and we want to reflect that in our organisation. By celebrating difference and incorporating diverse points of view and experiences, we can become closer to our artists, audiences and the communities we serve.

We are proud to be a Disability Confident employer, meaning we have been certified by the government as actively taking steps to attract, recruit and retain disabled workers. We understand that some disabled colleagues will need adjustments to help them perform to the best of their ability – these can be changes to the built environment and furniture, the tools and technology used in doing the job, aspects of the role, ongoing support or working arrangements.

Sadler's Wells also works collaboratively with Parents in Performing Arts (PiPA) in efforts to support parents and carers within the industry.

We welcome all applications by 11:59pm GMT on Sunday 21 January 2024. Interviews will take place on Monday 29 January 2024.

